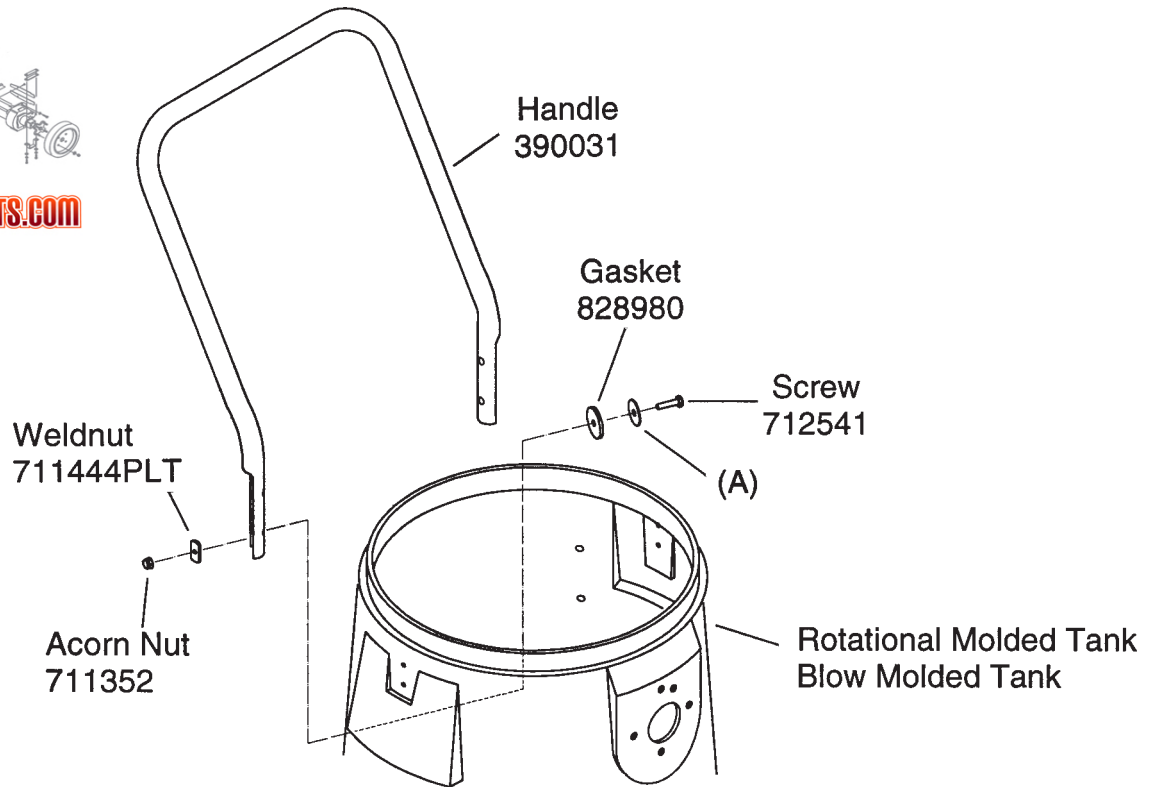
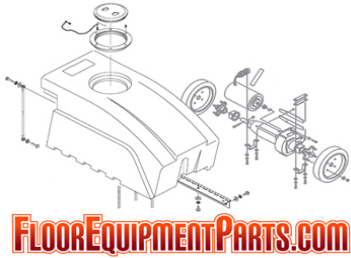


HANDLE INSTALLATION

Rotationally Molded Tanks Blow Molded Tanks

Minuteman[®]
Excellence Meets Clean



<u>Tank</u>	(A) <u>Washer</u>
Roto Mold	712761
Blow Mold	712766

1. Place washer (A) and gasket (828980) onto screw (712541) and slide screw through tank and handle. Screw weldnut (711444PLT) onto screw, while tightening weldnut and screw - make sure that weldnut stays in vertical position during tightening (smooth surface of weldnut facing out).
2. Screw acorn nut (711352) onto remaining thread and tighten with 7/16" wrench.

Tools: Phillips screwdriver or screw gun w/Phillips bit and 7/16" wrench

111 South Rohlwing Road · Addison, Illinois 60101 USA
Phone 630- 627-6900 · Fax 630- 627-1130
E-Mail, www.minutemanintl.com

A Member of the Hako Group

999350
Rev A 02/07